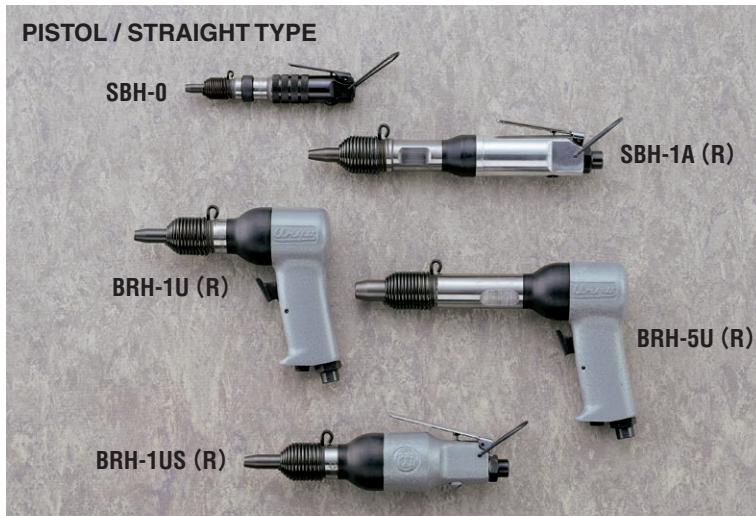
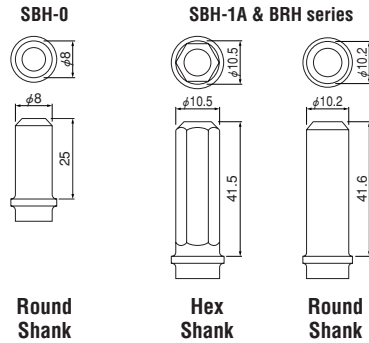


RIVETING HAMMERS

Easily controlled, slow hitting heavy blow gives just the right impact to form a rivet without excessive work or damage to the surrounding metal. These tools are convertible to chipping, caulking and ripping hammers with suitable chisels.



SHANK SIZE



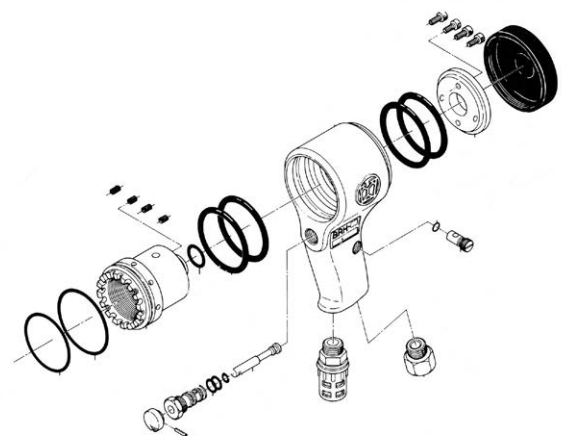
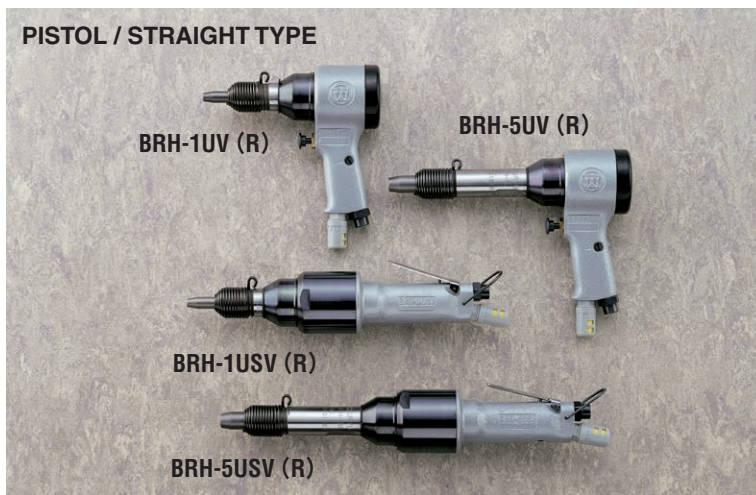
SPECIFICATIONS

Recommended Air Pressure : 0.6MPa(85psi)

Model	Riveting Capacity				Blow Per Min. (about)	Overall Length (about)		Weight Less Rivet Set (about)		Piston Diameter (about)		Piston Stroke (about)		Air Inlet Thread (Pipe Tap)	Air Hose Size		Average Air Consumption	
	Duralumin		Steel			mm	in	kg	lb	mm	in	mm	in		mm	in	m³/min	ft³/min
	mm	in	mm	in														
SBH-0	2.3	No.2	-	-	6500	123	4 27/32	0.32	0.7	10.00	25/64	23	29/32	NPT1/8	6.35	1/4	0.10	3.5
SBH-1A(R,H)	2.6	No.3	-	-	4000	209	8 15/64	0.86	1.9	11.11	7/16	56	2 3/16	NPT1/4	6.35	1/4	0.15	5.0
BRH-1U(R,H)	3.2	No.5	2.4	No.3	2800	122	4 15/16	1.05	2.4	14.30	9/16	38	1 1/2	NPT1/4	9.5	3/8	0.34	12.0
BRH-1US(R,H)	3.2	No.5	2.4	No.3	2800	180	7 1/8	1.00	2.2	14.30	9/16	38	1 1/2	NPT1/4	9.5	3/8	0.34	12.0
BRH-1UG(R,H)	3.2	No.5	2.4	No.3	2800	187	7 3/8	1.78	3.9	14.30	9/16	38	1 1/2	NPT1/4	9.5	3/8	0.34	12.0
BRH-5U(R,H)	6.4	1/4	4.8	No.10	1800	189	7 7/16	1.40	3.1	12.70	1/2	100	4	NPT1/4	9.5	3/8	0.37	13.0
BRH-5US(R,H)	6.4	1/4	4.8	No.10	1800	246	9 11/16	1.45	3.2	12.70	1/2	100	4	NPT1/4	9.5	3/8	0.37	13.0
BRH-5UG(R,H)	6.4	1/4	4.8	No.10	1800	258	10 5/32	2.13	4.7	12.70	1/2	100	4	NPT1/4	9.5	3/8	0.37	13.0

VIBRATION-LESS TYPE

To meet the growing demand for low noise and less vibration percussive tools, URYU offers four different models.



SPECIFICATIONS

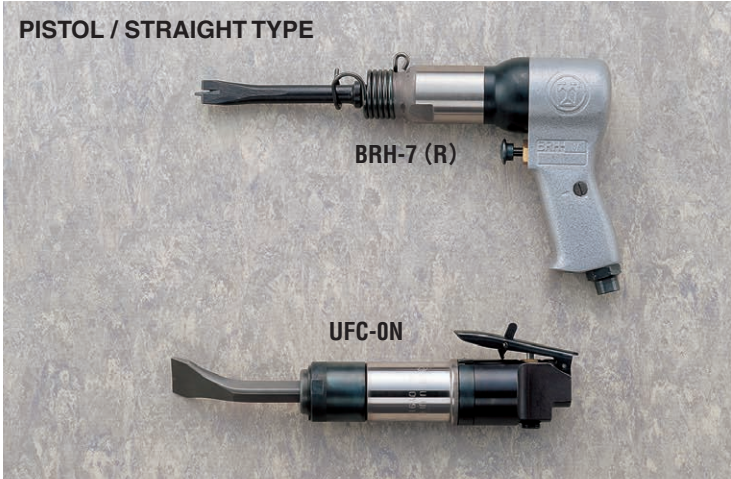
Recommended Air Pressure : 0.6MPa(85psi)

Model	Riveting Capacity				Blow Per Min. (about)	Overall Length (about)		Weight Less Rivet Set (about)		Piston Diameter (about)		Piston Stroke (about)		Air Inlet Thread (Pipe Tap)	Air Hose Size		Average Air Consumption	
	Duralumin		Steel			mm	in	kg	lb	mm	in	mm	in		mm	in	m³/min	ft³/min
	mm	in	mm	in														
BRH-1UV(R,H)	3.2	No.5	2.4	No.3	2800	143	5 5/8	1.37	3.0	14.30	9/16	38	1 1/2	NPT1/4	9.5	3/8	0.34	12.0
BRH-5UV(R,H)	6.4	1/4	4.8	No.10	1800	210	8 17/64	1.68	3.7	12.70	1/2	100	4	NPT1/4	9.5	3/8	0.37	13.0
BRH-1USV(R,H)	3.2	No.5	2.4	No.3	2800	271	10 21/32	1.60	3.5	14.30	9/16	38	1 1/2	NPT1/4	9.5	3/8	0.34	12.0
BRH-5USV(R,H)	6.4	1/4	4.8	No.10	1800	338	13 5/16	1.90	4.1	12.70	1/2	100	4	NPT1/4	9.5	3/8	0.34	12.0

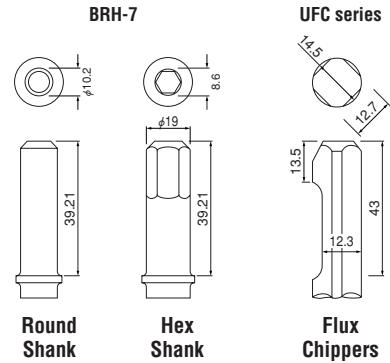
IMPACT CUTTERS/FLUX CHIPPERS

BRH-7 series fast hitting and powerful hammers are versatile for various hammering jobs in cutting, ripping, shearing, punching, etc., Needle scaling attachments are available.

UFC series are needed for general scaling applications such as removal of splatter and excess metal after welding, removal of rust, scale paint and soot from metal surface, light fins, flash and sand from castings. Two models are available : UFC-0N for light work and UFC-1N with Valve for heavy duty work.



SHANK SIZE



SPECIFICATIONS

Recommended Air Pressure : 0.6MPa(85psi)

Model	Blow Per Min. (about)	Overall Length (about)		Weight Less Chisel (about)		Piston Diameter (about)		Piston Stroke (about)		Air Inlet Thread (Pipe Tap)	Air Hose Size		Average Air Consumption	
	bpm	mm	in	kg	lb	mm	in	mm	in	in	mm	in	m ³ /min	ft ³ /min
BRH-7(R,H)	3400	168	6 39/64	1.64	3.60	19.05	3/4	50	1 31/32	NPT1/4	9.5	3/8	0.48	17.0
UFC-0N	5300	180	7 1/8	1.38	3.04	25.00	63/64	28	1 1/4	NPT1/4	9.5	3/8	0.3	10.7
UFC-1N	4200	190	7 1/2	1.50	3.30	25.00	63/64	34	1 11/32	NPT1/4	9.5	3/8	0.3	10.7

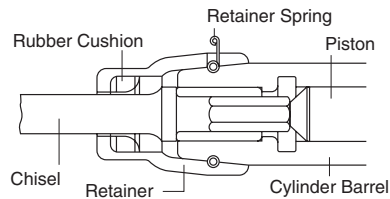
CHIPPING & CAULKING HAMMERS

Rugged-designed powerful Hammers with high speed blows are ideal for billet chipping/general chipping and caulking/weld flux, paint, and rust removal/removing gates and fins from castings.



CHISEL RETAINER (Option)

Applicable to both PB and AA series excepting AA-00.



SPRING CHISEL RETAINER

(for AA-00)



(705-813-1)

SPECIFICATIONS

Recommended Air Pressure : 0.6MPa(85psi)

Model	Chisel Shank Size				Blow Per Min. (about)	Overall Length (about)		Weight Less Chisel (about)		Piston Diameter (about)		Piston Stroke (about)		Air Inlet Thread (Pipe Tap)	Air Hose Size		Average Air Consumption		
	Round		Hexagonal			mm	in	kg	lb	mm	in	mm	in		in	mm	in	m ³ /min	ft ³ /min
	mm	in	mm	in															
AA-00(R,H)	12.7	1/2	10.5	3/8	2700	228	8 31/32	2.3	5.00	20.0	25/32	50	1 31/32	NPT1/4	9.5	3/8	0.35	12.3	
AA-20(R,H)	17.5	5/8	14.7	9/16	2300	270	10 5/8	5.3	11.60	28.0	1 7/64	55	2 5/32	NPT3/8	12.7	1/2	0.60	21.1	
AA-30(R,H)	17.5	5/8	14.7	9/16	2000	298	11 23/32	5.7	12.50	28.0	1 7/64	79	3 1/8	NPT3/8	12.7	1/2	0.60	21.1	
AA-40(R,H)	17.5	5/8	14.7	9/16	1450	340	13 3/8	6.1	13.40	28.0	1 7/64	111	4 3/8	NPT3/8	12.7	1/2	0.60	21.1	
PB-20(R,H)	17.5	5/8	14.7	9/16	1900	350	13 25/32	6.6	14.50	28.5	1 1/8	76	3	NPT3/8	12.7	1/2	0.80	28.0	
PB-30(R,H)	17.5	5/8	14.7	9/16	1500	397	15 5/8	7.1	15.60	28.5	1 1/8	102	4 1/62	NPT3/8	12.7	1/2	0.80	28.0	